

[www.indiratrade.com](http://www.indiratrade.com)



MONDAY

# CURRENCY COMMODITIES

**WEEKLY REPORT  
17 DEC TO 21 DEC 2018**

**EDGE**



**INDIRA SECURITIES PVT. LTD.**



## WEEKLY INDICES CHANGES

INDEX	CLOSE	PREV. CLOSE	Change (%)
SENSEX	35962.93	35673.25	0.81%
NIFTY	10805.5	10693.7	1.05%
DOW	24100.5	24388.9	-1.18%
NASDAQ	6910.67	6969.25	-0.84%
FTSE	6845.17	6778.11	0.99%
NIKKEI	21531.5	21196	1.58%
DAX	10865.8	10788.1	0.72%
CAC	4853.7	4813.13	0.84%

## Market Round Up:

- Forex - U.S. Dollar Rises after Retail Sales: - The U.S. dollar was higher on Friday after better-than-expected retail sales and amid expectations that the Federal Reserve will raise rates next week. Retail sales accelerated in November, with core retail sales up 0.2%, alleviating fears of a slowing U.S. economy.
- Meanwhile investors are focused on an upcoming meeting of the U.S. central bank, which is expected to increase rates, with a 79.2% chance priced in, according to Investing.com's Fed Rate Monitor Tool. Still, investors remain uncertain of the number of rate hikes in 2019, after dovish comments from Fed officials, who say interest rates are nearing neutral, whereby they neither stimulate nor hinder the economy.
- The U.S. dollar index, which measures the greenback's strength against a basket of six major currencies, rose 0.5% to 97.55.
- Dollar gains are likely to be short lived however, as the central bank is expected to slow down its pace of rate hikes in 2019. A mix of inflation data and dovish comments from Fed policymakers has investors uncertain about how many rate hikes there will be next year.

## RBI REFRANCE RATE

INDEX	CLOSE	PREV. CLOSE
USDINR	71.7359	70.5663
EURINR	81.4628	80.2245
JPYINR	63.2000	62.5300
GBPINR	90.5809	90.1212

## FII FIGURES

DATE	FII FIGURES IN CRORE
10/12	116
11/12	-2421
12/12	-1299
13/12	675
14/12	861
NET	-2068

## DII FIGURES

DATE	DII FIGURES IN CRORE
10/12	-145
11/12	2255
12/12	1121
13/12	-52
14/12	-302
NET	-2752



## DOLLAR INDEX CHART



1. **RSI:** 62.20
2. **ADX:** Indicating Sideways signal
3. **Stochastic Oscillator:** indicating Sideways signal
4. **ATR:** 1.19
5. **Moving averages:** Pair is trading above 50 and 100 Day simple moving averages..

## USDINR TECHNICAL CHART (INDIAN RUPEE)



- 1) **RSI:** 79.39
- 2) **ADX:** Indicating positive signal
- 3) **Stochastic Oscillator:** indicating positive signal
- 4) **ATR:** 0.8760
- 5) **Moving averages :** Pair is trading above 50 and 100 Day simple moving averages..



## DOMESTIC CURRENCY

Domestic	S2	S1	PIVOT	R1	R2
USDINR	71.98	72.37	72.71	73.11	73.45
EURINR	93.57	94.29	95.35	96.07	97.13
GBPINR	63.73	64.02	64.49	64.78	65.25
JPYINR	71.98	72.37	72.71	73.11	73.45

## GLOBAL CURRENCY

Global	S2	S1	PIVOT	R1	R2
DOLLAR INDEX	93.26	94.19	94.78	95.71	96.3
EURUSD	111.86	112.55	112.99	113.68	114.12
GBPUSD	1.29	1.3	1.31	1.31	1.33
USDJPY	1.15	1.15	1.17	1.18	1.19

## CURRENCY PERFORMANCE

CURRENCY	CLOSE PRICE	DAY	WEEK	MONTHLY	YEARLY
EURO	1.1312	0.04%	-0.61%	-0.17%	-3.70%
POUND	1.25831	0.00%	-1.12%	-1.50%	-5.51%
AUSTRALIAN DOLLAR	0.71783	0.03%	-0.32%	-1.37%	-6.16%
NEWZEALAND DOLLAR	0.67958	0.01%	-1.03%	-0.51%	-2.83%
YEN	113.47	0.09%	0.58%	-0.22%	0.61%
YUAN	6.89728	-0.03%	0.23%	-0.38%	4.41%
SWISS FRANC	0.9976	0.36%	0.74%	-0.92%	1.22%
CANADIAN DOLLAR	1.33794	-0.02%	0.47%	1.57%	4.06%
MEXICAN PESO	20.0981	-0.67%	-0.12%	0.04%	6.07%
INDIAN RUPEE	71.91	0.55%	1.50%	0.00%	12.01%
BRAZILIAN REAL	3.917	0.67%	0.25%	3.51%	18.98%
RUSSIAN RUBBLE	66.7611	0.79%	0.57%	1.37%	13.86%
DOLLAR INDEX	97.41	-0.03%	0.96%	0.53%	3.66%
KORREAN WON	1131.7	0.64%	0.70%	0.42%	4.30%
SOUTH AFRICAN RAND	14.3542	-0.23%	1.63%	1.26%	12.70%
SINGAPORE DOLLAR	1.37499	-0.12%	0.51%	0.12%	2.18%
HONGKONG DOLLAR	7.8129	0.01%	-0.04%	-0.21%	-0.04%

# COMMODITIES

## FUNDAMENTAL OF COMMODITIES

### MAJOR COMMODITIES

#### MCX ENERGY WEEKLY

Commodity	S2	S1	Pivot	R1	R2
Crude oil	3450.3	3649.7	3758.3	3957.7	4066.3
Natural Gas	289.0	306.5	316.6	334.1	344.2

#### MCX BASE METAL WEEKLY

Commodity	S2	S1	Pivot	R1	R2
Copper	418.8	428.6	438.1	447.9	457.4
Zinc	178.2	183.1	186.9	191.8	195.5
Lead	136.7	139.5	141.1	143.8	145.4
Nickel	740.2	760.7	782.6	803.1	825.0

#### PRECIOUS METAL WEEKLY

Commodity	S2	S1	Pivot	R1	R2
Gold	29707.0	30651.0	31336.0	32280.0	32965.0
Silver	34657.3	36314.7	37157.3	38814.7	39657.3

International Commodity	S2	S1	Pivot	R1	R2	CMP	PREV CLOSE
Gold COMEX	\$1,216.33	\$1,234.67	\$1,245.33	\$1,263.67	\$1,274.33	\$1,247.00	\$1,253.00
SILVER COMEX	14.11	14.41	14.57	14.87	15.03	14.76	14.7
NYMEX CRUDE	48.1	50.36	52.56	54.82	57.02	52.83	52.61
BRENT CRUDE	55.86	58.59	61.14	63.87	66.42	61.69	61.31

#### Updates:

- Gold Falls as Focus Turns to Fed: - Gold prices were lower on Friday, as the U.S. dollar rose in anticipation of a Federal Reserve rate hike next week. The price of bullion was pushed lower by a stronger greenback. The Fed is expected to increase rates by 25 basis points at its next meeting on Wednesday, its fourth rate hike this year. Chances of a hike are priced in at 79.2%, according to Investing.com's Fed Rate Monitor Tool.
- Natural Gas Price Fundamental Daily Forecast – Fib Level at \$3.873 Must Hold or Prices Could Accelerate to Downside: - The daily chart pattern suggests investors are bracing for a period of lower demand, which is another way of saying they are betting that temperatures will remain closer to normal for this time of year. The main trend is up, but momentum is trending lower. The minor trend is down and this is controlling the momentum.



# COMMODITIES

## MAJOR COMMODITIES

Commodity Major	Price	Day	Weekly	Monthly	Yearly
<b>Crude Oil</b>	51.4112	0.42%	-2.33%	-9.46%	-10.97%
<b>Brent</b>	60.4702	0.18%	-1.97%	-9.77%	-4.88%
<b>Natural gas</b>	3.6838	-3.87%	-14.73%	-5.23%	39.42%
<b>Gold</b>	1235.57	-0.01%	-0.77%	2.08%	-1.84%
<b>Silver</b>	14.5943	-0.01%	-0.35%	1.96%	-9.71%
<b>Platinum</b>	787.01	-0.75%	-0.35%	-6.43%	-11.90%
<b>Palladium</b>	1235.49	-0.17%	1.11%	6.99%	20.98%
<b>Copper</b>	2.7569	-0.02%	1.23%	-1.85%	-11.85%
<b>Lead</b>	1941.25	-0.06%	-2.09%	1.52%	-24.89%
<b>Aluminum</b>	1913.75	0.05%	-1.77%	-0.15%	-6.51%
<b>Tin</b>	19434	-0.82%	-0.34%	0.08%	-0.57%
<b>Zinc</b>	2633	0.67%	2.64%	-3.31%	-19.65%



## MCX GOLD CHART



Commodity	S2	S1	Pivot	R1	R2
Gold	29707.0	30651.0	31336.0	32280.0	32965.0

GOLD TECHNICAL INDICATOR	
RSI(14)	BUY
STOCH(9,6)	BUY
STOCHRSI(14)	BUY
MACD(12,26)	SELL
ADX(14)	SELL
Williams %R	NETURAL
CCI(14)	BUY
Highs/Lows(14)	BUY
Ultimate Oscillator	SELL
ROC	BUY
BUY	5
SELL	3
NEUTRAL	1
<b>SUMMARY</b>	<b>MILD BULLISH</b>

## GOLD INTERNATIONAL CHART



Commodity	S2	S1	Pivot	R1	R2
Gold	\$1,216.3	\$1,234.7	\$1,245.3	\$1,263.7	\$1,274.3

GOLD INTERNATIONAL TECHNICAL INDICATOR	
RSI(14)	BUY
STOCH(9,6)	BUY
STOCHRSI(14)	BUY
MACD(12,26)	BUY
ADX(14)	BUY
Williams %R	BUY
CCI(14)	BUY
Highs/Lows(14)	BUY
Ultimate Oscillator	BUY
ROC	BUY
BUY	9
SELL	0
NEUTRAL	0
<b>SUMMARY</b>	<b>STRONG BULLISH</b>



## MCX SILVER CHART



Commodity	S2	S1	Pivot	R1	R2
Silver	34657.3	36314.7	37157.3	38814.7	39657.3

### SILVER TECHNICAL INDICATOR

RSI(14)	BUY
STOCH(9,6)	BUY
STOCHRSI(14)	BUY
MACD(12,26)	SELL
ADX(14)	SELL
Williams %R	NETURAL
CCI(14)	BUY
Highs/Lows(14)	BUY
Ultimate Oscillator	BUY
ROC	BUY
BUY	6
SELL	2
NEUTRAL	1
<b>SUMMARY</b>	<b>MILD BULLISH</b>

## SILVER INTERNATIONAL CHART



Commodity	S2	S1	Pivot	R1	R2
Silver	\$14.1	\$14.4	\$14.6	\$14.9	\$15.0

### SILVER INTERNATIONAL TECHNICAL INDICATOR

RSI(14)	SELL
STOCH(9,6)	BUY
STOCHRSI(14)	BUY
MACD(12,26)	BUY
ADX(14)	BUY
Williams %R	SELL
CCI(14)	SELL
Highs/Lows(14)	BUY
Ultimate Oscillator	SELL
ROC	BUY
BUY	5
SELL	4
NEUTRAL	0
<b>SUMMARY</b>	<b>MILD BULLISH</b>





## MCX COPPER CHART



Commodity	S2	S1	Pivot	R1	R2
Copper	418.8	428.6	438.1	447.9	457.4

### COPPER TECHNICAL INDICATOR

RSI(14)	BUY
STOCH(9,6)	BUY
STOCHRSI(14)	BUY
MACD(12,26)	SELL
ADX(14)	SELL
Williams %R	NETURAL
CCI(14)	SELL
Highs/Lows(14)	BUY
Ultimate Oscillator	SELL
ROC	SELL
BUY	4
SELL	5
NEUTRAL	1
SUMMARY	NETURAL

## COPPER INTERNATIONAL CHART



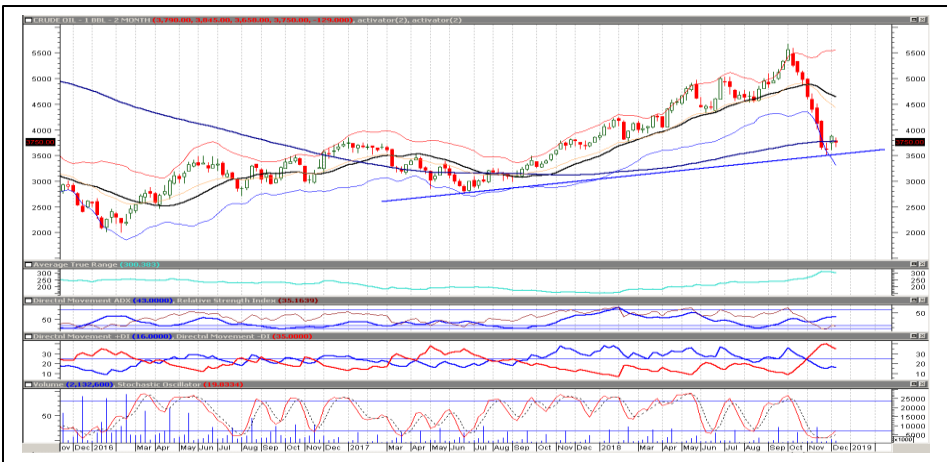
Commodity	S2	S1	Pivot	R1	R2
Copper	\$2.6	\$2.7	\$2.8	\$2.8	\$2.9

### COPPER INTERNATIONAL TECHNICAL INDICATOR

RSI(14)	SELL
STOCH(9,6)	BUY
STOCHRSI(14)	SELL
MACD(12,26)	BUY
ADX(14)	BUY
Williams %R	SELL
CCI(14)	SELL
Highs/Lows(14)	BUY
Ultimate Oscillator	SELL
ROC	SELL
BUY	4
SELL	6
NEUTRAL	0
SUMMARY	MILD BEARISH



## MCX CRUDE CHART



Commodity	S2	S1	Pivot	R1	R2
Crude oil	3450.3	3649.7	3758.3	3957.7	4066.3

BRENT CRUDE OIL TECHNICAL INDICATOR	
RSI(14)	SELL
STOCH(9,6)	BUY
STOCHRSI(14)	BUY
MACD(12,26)	SELL
ADX(14)	SELL
Williams %R	SELL
CCI(14)	SELL
Highs/Lows(14)	BUY
Ultimate Oscillator	SELL
ROC	SELL
BUY	3
SELL	7
NEUTRAL	0
<b>SUMMARY</b>	<b>STRONG BEARISH</b>

## NYMEX CRUDE CHART



Commodity	S2	S1	Pivot	R1	R2
Crude oil	\$48.1	\$50.4	\$52.6	\$54.8	\$57.0

CRUDE.OILNYM TECHNICAL INDICATOR	
RSI(14)	SELL
STOCH(9,6)	BUY
STOCHRSI(14)	BUY
MACD(12,26)	SELL
ADX(14)	SELL
Williams %R	SELL
CCI(14)	SELL
Highs/Lows(14)	BUY
Ultimate Oscillator	SELL
ROC	SELL
BUY	3
SELL	7
NEUTRAL	0
<b>SUMMARY</b>	<b>STRONG BEARISH</b>



## MCX NATURAL GAS



Commodity	S2	S1	Pivot	R1	R2
Natural Gas	289.0	306.5	316.6	334.1	344.2

NATURALGAS TECHNICAL INDICATOR	
RSI(14)	BUY
STOCH(9,6)	SELL
STOCHRSI(14)	SELL
MACD(12,26)	BUY
ADX(14)	BUY
Williams %R	NETURAL
CCI(14)	BUY
Highs/Lows(14)	BUY
Ultimate Oscillator	SELL
ROC	BUY
BUY	5
SELL	3
NEUTRAL	1
<b>SUMMARY</b>	<b>MILD BULLISH</b>

## NATURAL GAS INTERNATIONAL



Commodity	S2	S1	Pivot	R1	R2
Natural Gas	\$3.9	\$4.2	\$4.4	\$4.7	\$4.9

NATURAL GAS INTER. TECHNICAL INDICATOR	
RSI(14)	BUY
STOCH(9,6)	SELL
STOCHRSI(14)	SELL
MACD(12,26)	BUY
ADX(14)	SELL
Williams %R	NETURAL
CCI(14)	BUY
Highs/Lows(14)	BUY
Ultimate Oscillator	BUY
ROC	BUY
BUY	5
SELL	3
NEUTRAL	1
<b>SUMMARY</b>	<b>NETURAL</b>

# IMP ECONOMIC DATA TO WATCH FOR THE WEEK

DATE	TIME	CURRENCY	ECONOMIC DATA	FORECAST	PREVIOUS
MonDec 17					
TueDec 18	2:30pm	EUR	German Ifo Business Climate	101.8	102
	7:00pm	USD	Building Permits	1.27M	1.26M
		USD	Housing Starts	1.23M	1.23M
WedDec 19	3:00pm	GBP	CPI y/y	2.30%	2.40%
		GBP	PPI Input m/m	-2.80%	0.80%
		GBP	RPI y/y	3.20%	3.30%
ThuDec 20	12:30am	USD	FOMC Economic Projections		
		USD	FOMC Statement		
		USD	Federal Funds Rate	<2.50%	<2.25%
	1:00am	USD	FOMC Press Conference		
	Tentative	JPY	BOJ Policy Rate	-0.10%	-0.10%
	Tentative	JPY	Monetary Policy Statement		
	Tentative	JPY	BOJ Press Conference		
	3:00pm	GBP	Retail Sales m/m	0.30%	-0.50%
	5:30pm	GBP	MPC Official Bank Rate Votes	0-0-9	0-0-9
		GBP	Monetary Policy Summary		
		GBP	Official Bank Rate	0.75%	0.75%
FriDec 21	3:00pm	GBP	Current Account	-22.2B	-20.3B
		GBP	Final GDP q/q	0.60%	0.60%
		GBP	Public Sector Net Borrowing	7.0B	8.0B
	7:00pm	USD	Core Durable Goods Orders m/m	0.30%	0.20%
		USD	Final GDP q/q	3.50%	3.50%
		USD	Durable Goods Orders m/m	1.80%	-4.30%
	8:30pm	USD	Core PCE Price Index m/m	0.20%	0.10%
		USD	Personal Spending m/m	0.30%	0.60%
		USD	Revised UoM Consumer Sentiment	97.6	97.5



204 Amardarshan Building 3rd floor Saket Nagar , Indore-452018

**Call:** 0731-4797170-173 **Mob:** +91-9303172345 / **Toll Free:** 18001030059 / **SMS:** <INDIRA> to 56070

## DISCLAIMER

This report is for private circulation within the Indira Group. This report is strictly confidential and for information of the selected recipient only and may not be altered in any way, transmitted to, copied or distributed, in part or in whole, to any other person or to the media or reproduced in any form. This report should not be construed as an offer or solicitation to buy or sell any securities or any interest in securities. It does not constitute a personal recommendation or take into account the particular investment objectives, financial situations, or any such factor. The information, opinions, estimates and forecasts contained here have been obtained from, or are based upon, sources we believe to be reliable, but no representation of warranty, express or implied, is made by us to their accuracy or completeness. Opinions expressed are our current opinions as of our current opinions as of the data appearing on this material only and are subject to change without notice.